

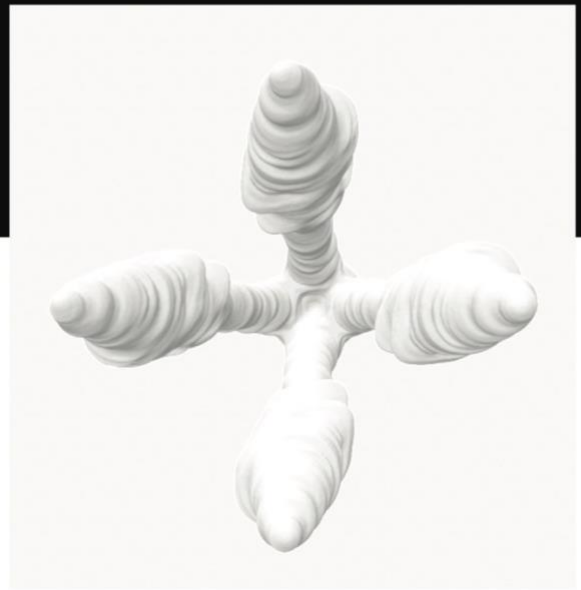
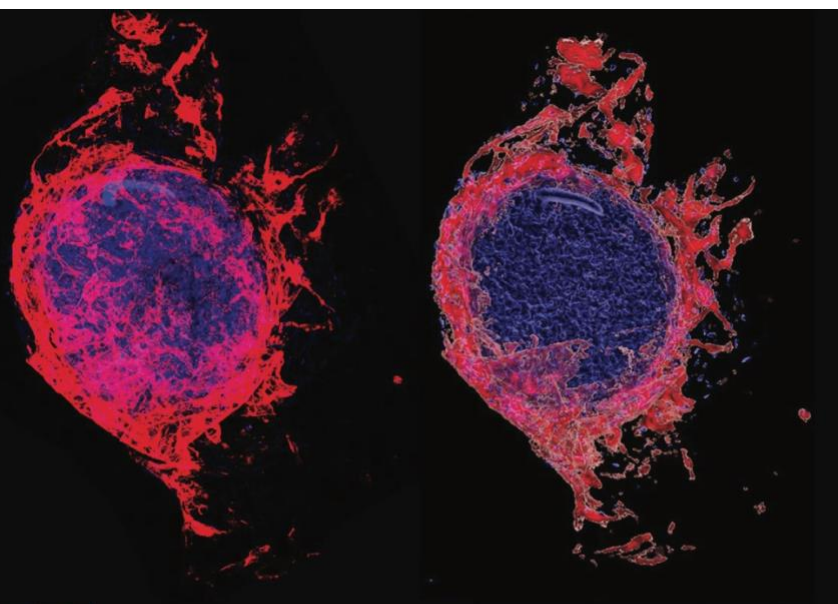
# ANAT



2021  
ANNUAL  
REPORT

ANAT works on Kurna Country and also the lands of the Peramangk, Wurundjeri, and Yalukit Willam clan of the Boon Wurrung people in the Kulin nation.

We pay our respects to Elders past, present and future.  
We recognise First Nations people as the first  
artists & scientists.



Images clock wise from top left: 1. *Old Ways, New Indigenous Protocols and Artificial Intelligence (IP//AI)*. Image Jasmine Miikika Craciun 2. Bioprinted mini-hearts, from 2021 ANAT Synapse residents **Linda Dement** and **Paul Brown**'s work with **Dr Carmine Gentile**, The Heart Project 2021 Gentile Research Group, **UTS**. The view to the left is from under the microscope and to the right, a 3D rendering from analyses made using IMARIS software. 3. 2021 ANAT Synapse residents **Linda Dement** and **Paul Brown**, *George's breath* as a 3d shape, from frequency x volume over time. 4. **Jasmine Miikika Craciun**, *My Healing*, NEW LIGHT 2021. 5. ANAT SAHMRI resident **Dr Helen Pynor** and collaborator genomic scientist **Dr Jimmy Breen**, documentation, testing the collection of a shared breath sample using the R-tube device. 6. **Dearna Newchurch**, inaugural ANAT First Nations Program Producer.

**Front cover:** 2021 ANAT Synapse residents **Linda Dement** and **Paul Brown**, Cardiac spheroid drawing, inspired by woodblock prints and image 2 of this page.



## CONTENTS

- 4. INTRODUCTION
- 5. CHAIR'S REPORT
- 7. CEO'S REPORT
- 9. GOVERNANCE
- 10. STAFF
- 13. ARTISTIC PROGRAM
- 18. ANAT ALUMNI OUTCOMES
- 21. ADVOCACY
- 23. STATISTICS
- 24. PARTNERS
- 26. FINANCIAL REPORT

## Introduction

For over 30 years, the Australian Network for Art & Technology (ANAT) has been a catalyst for experimentation and innovation across art, science and technology.

### WHO ARE WE:

We are Australia's leaders in pairing artists with science and technology partners.

### WHAT WE DO:

We broker opportunities for artists to work with partners drawn from the science and technology sectors. We do this because artists are essential contributors to how we imagine and shape our future. We understand that experimentation is the bedrock of innovation, and that harnessing diverse perspectives and knowledge is central to Australia's research future.

### HOW WE DO IT:

Collaboration is in our DNA. For over three decades we have forged relationships with industry, academia, the community and government to create unique opportunities for artists. We deliver residencies, symposia, workshops and other professional pathways, supported by robust national and international networks.

## CHAIR'S REPORT

After the disruptions of 2020, this year saw ANAT emerge stronger, more engaged and more resilient to the ongoing challenges with which the world continues to present us.

The four key objectives laid down by ANAT's Board and management, and captured in our 2021-2024 strategic plan, state that we will:

- create opportunities for artists to research and experiment with science and technology by proactively connecting artists with collaborators from these sectors;
- enable artistic perspectives that reflect the diversity of contemporary Australia and prioritise support for First Nations artists;
- communicate the value of artists as essential contributors to how we imagine and shape our future; and
- develop and diversify revenue and partnerships to maximise growth and increase impact and reach.

To that end, we've continued to build on the successes we saw in 2020, with more cooperative ventures with organisations such as SAHMRI, Adelaide University, Illuminate Adelaide, co-workshops such as the IP (Indigenous Protocols) AI (Artificial Intelligence) workshop and incubator, as well as Synapse residencies and the Australian Antarctic Division Arts Fellowship, all reaching towards achieving those objectives.

April 2021 marked an important milestone for ANAT as we appointed Dearna Newchurch as our inaugural First Nations Program Producer. Dearna is a seasoned arts and events Producer who has worked across several cultural organisations in South Australia. Prioritising First Nations perspectives and understanding, Dearna has worked with and for a variety of urban and regional communities, including the opening cultural ceremony of the Adelaide Fringe *Tindo Utpurndee* and *Desert Fringe* in Port Augusta, and we're very fortunate to have her as part of the team.

As our keystone event, ANAT SPECTRA remained a focus, with contemporary artist, curator, producer, writer and thinker David Pledger appointed as the inaugural ANAT SPECTRA Program Curator. Working at the intersection of the performing, visual and media arts in Australia, Asia and Europe, David is notable for engaging audiences in productive and provocative ways. His guidance, enthusiasm and creativity have proven invaluable to the project and the broader team, working as they were under logistical strictures and unavoidable delays imposed by Covid.

During the year, we were also lucky enough to be able to share the skills of Dr Lynda Kelly, who worked with us as part of the Australia Council Digital-Strategist-in-Residence Program. Under the leadership of CEO Melissa DeLaney 2021 has seen ANAT flourish and grow in ways both expected and unexpected, as the organisation redefines itself and its place in the nexus between arts, technology and science.

Melissa has played a pivotal role in that process, and on behalf of the board, I would like to thank both her, and all who have played a part in ANAT's ongoing success, including our remarkable team of Jenn Brazier, Carolyn Kavanagh, Steven 'Pix' Pickles, Dearna Newchurch and David Pledger.

For my part, I would like to thank my colleagues on the Board, David Anders, Brad Darkson, Professor Christopher Fluke, Dr Erica Seccombe and Professor Ted Snell for their passion and willingness to share their time and talents to advance ANAT's cause.

I would also like to thank my predecessor in the role of chair, Caroline Farmer, and Liz Hughes for their significant contributions to the Board over the period of their tenure, with both leaving ANAT in 2021. Caroline joined in May 2017, serving on both the Development Subcommittee and the HR Subcommittee, while Liz Hughes joined in May 2018, and served on the Development Subcommittee. They have both left a lasting legacy and their contribution will be missed.

Accordingly, I extend my final thanks to our artists and collaborators across the country and across the globe for sharing in our vision.

A handwritten signature in black ink, appearing to read 'Michael Nelson', with a long horizontal flourish extending to the right.

**Michael Nelson**

*ANAT Board Chair*

## CEO'S REPORT

As with many organisations during this year, a key strength was our people. ANAT's staff, Board, artists and partners worked through 2021 on ambitious programming with flexibility and determination in the delivery of another successful year, in artistic programs and operations. This report is a testament and thank you to everyone who made things happen during 2021.

ANAT continued to be quick to respond to ongoing challenges due to border restrictions and rolling lockdowns, operating nationally in digital spaces. One example of this was the DNA Lab, featuring a brains' trust of experts, including artists, scientists, ethicists and law experts and ANAT staff working with the subject of DNA inspired by Dr Helen Pynor's SAHMRI residency working with bioinformatician/computational biologist Dr Jimmy Breen.

This year's impressive Synapse program featured Linda Dement and Dr Paul Brown alongside Dr Carmine Gentile from the Cardiovascular Regeneration Group, University of Technology Sydney and the evocative tale of George's last breath, and Svenja Kratz in the quest for immortality in her residency, with multiple partners including the University of Tasmania and QUT (Queensland University of Technology) in *Posthuman Genetic Legacies*.

Despite four postponements, much work was done behind the scenes on ANAT SPECTRA Multiplicity, engaging independent curator David Pledger to work with ANAT and project team in Adelaide and Melbourne, along with partners to work with the curatorial theme of multiplicity. With a national callout receiving over 65 symposium submissions, ANAT SPECTRA developed into a unique blended delivery model for 2022.

Through the support of Arts South Australia, ANAT worked with Bookabee in a cultural sensitivity training program. A South Australian based Aboriginal cultural consultancy, Bookabee led the training, guiding a deeper understanding of creating safe and inclusive organisations. This aligned with ANAT's values as an organisation and its people. As a small organisation we are perfectly positioned to create systems of trust and care.

ANAT's partners play a vital part in working to support the programs and organisation. I'd like to once again thank the Australia Council for the Arts, Arts South Australia, the Copyright Agency and program partners including the Faculty of Fine Art and Music (University of Melbourne). Other program partnerships include New Light, a national contemporary First Nations screen based program with Illuminate Adelaide and the Adelaide Festival Centre, and supporting Old Ways, New in the Indigenous Protocols AI Incubator and the protocols paper, now in draft form.

On a personal note, I was privileged to be a Sir Edward 'Weary' Dunlop Fellow to participate in the Asialink Leaders Program 2021. Very much like ANAT, Asialink is a network of expertise and generosity of spirit. With a mix of face-to-face (when COVID allowed) and on-line workshops, coaching and trainings along with social networking events, it was an incredible program for me to expand on my recent experiences working and living in Vietnam and to become more broadly connected to other areas of Asia, contributing to the New Asia narrative.



**Melissa DeLaney**  
ANAT Chief Executive Officer



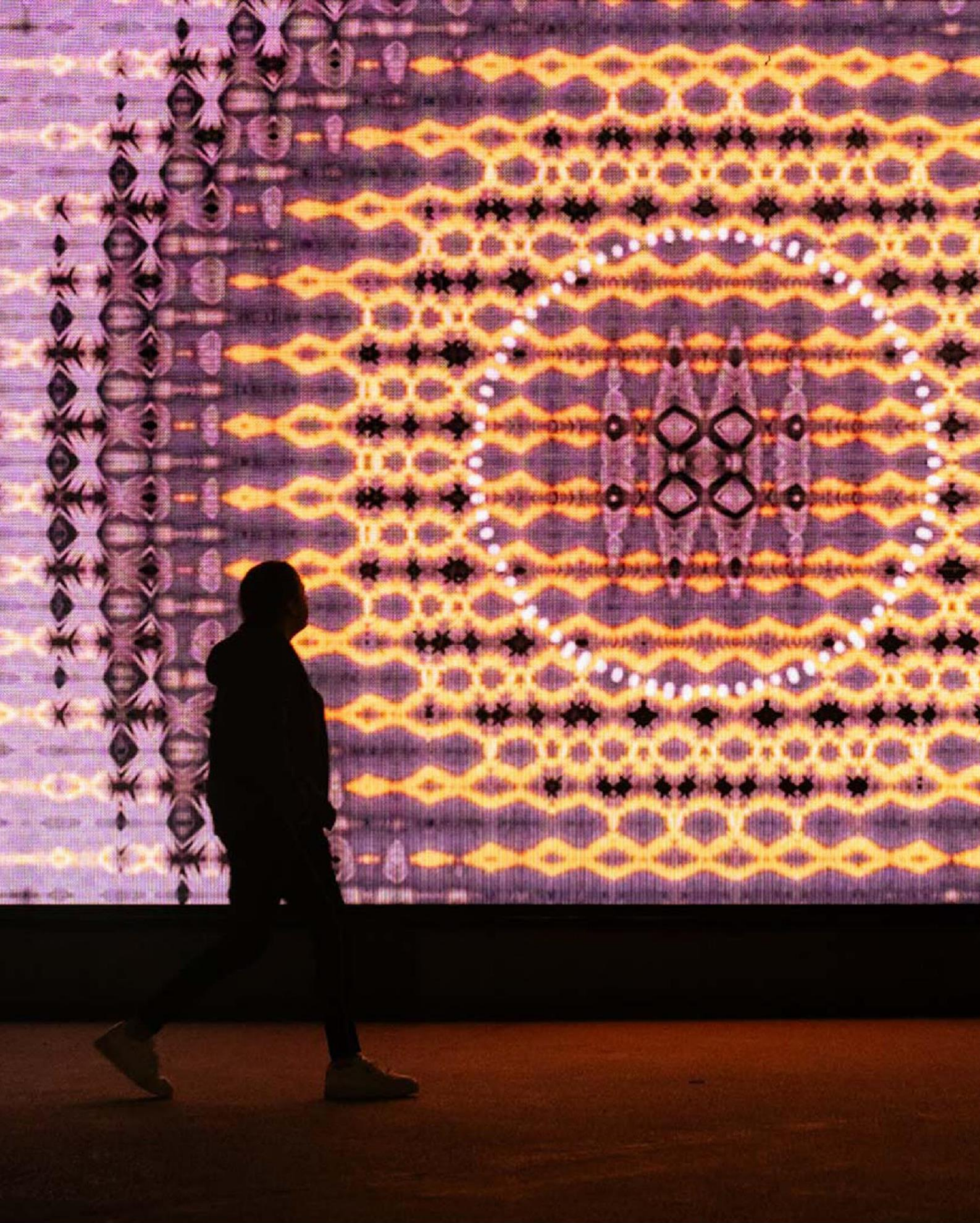


Image: **Lyndon Davis'** work *Beeyali*, New Light 2021, Adelaide Festival Centre screens. Photograph Frankie The Creative. Lyndon collaborated with Leah Barclay & Tricia King, visualising the calls of black and white cockatoos on Kabi Kabi Country, using cymatics, the science of visualising acoustic energy or sound.



## GOVERNANCE

### Board of Directors

Caroline Farmer - Chair (Appointed May 2017-2021)

David Anders (Appointed May 2015)

Dr Christopher Fluke (Appointed May 2017)

Liz Hughes (Appointed May 2018-2021)

Michael Nelson (Appointed May 2018)

Dr Erica Seccombe (Appointed May 2018)

Professor Ted Snell (Appointed May 2018)

Melissa DeLaney (Appointed August 2020)

### Risk Subcommittee

David Anders - Chair

Christopher Fluke

Michael Nelson

Melissa DeLaney

### Development Subcommittee

Caroline Farmer (departed 2021)

Ted Snell

Liz Hughes (departed 2021)

Michael Nelson

Brad Darkson

Melissa DeLaney

### Human Resources Subcommittee

**The HR Subcommittee is not a standing committee and is convened as needed**

Caroline Farmer – Chair (departed 2021)

Dr Erica Seccombe

Michael Nelson

Melissa DeLaney

# ANAT STAFF



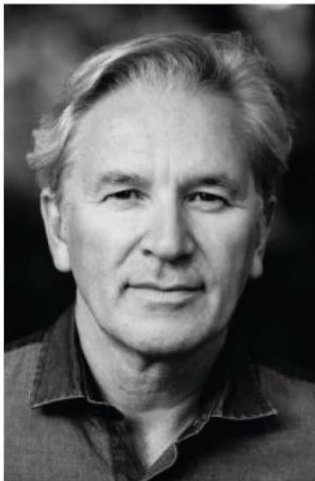
**Melissa Delaney**  
Chief Executive  
Officer



**Jenn Brazier**  
Program Manager



**Carollyn Kavanagh**  
Marketing &  
Communications  
Manager



**David Pledger**  
ANAT SPECTRA  
Program Curator



**Dearna Newchurch**  
First Nations  
Program Producer



**Steven Pickles**  
Technology Officer



**Petra Elliott**  
ANAT SPECTRA  
Administrator



The Blind Spots of Artificial Intelligence

## Out of the Black Box: Indigenous Protocols for AI

We nicknamed our desired protocols around this as 'Blackfella box', referencing the idea of 'black boxes' in digital systems; this was our shorthand for identifying areas of knowledge that we could not share with the world.



**"The stories we tell ourselves about AI reflect our cultural context in ways we hardly realise until we shine a light on them. This incubator will be an important program to develop Indigenous-led narratives, art and protocols about AI. It is an exhilarating initiative!"**  
— Genevieve Bell.





Image top: (L-R) ANAT CEO **Melissa DeLaney**, Co-Founder and Creative Director at **Illuminate Adelaide**, **Rachael Azzopardi**, Lord Mayor **Sandy Verschoor**, Co-Founder & Creative Director, **Illuminate Adelaide**, **Lee Cumberlidge** and ANAT Program Manager **Jenn Brazier**  
 Below: **Science Gallery Melbourne** became a key partner for ANAT SPECTRA.



## ARTISTIC PROGRAM

### ANAT SYNAPSE RESIDENCIES

ANAT's Synapse residency program is a strategic, focused intervention that leads to profound artistic and professional development for the participants. Synapse involves Australian research organisations hosting artists in embedded residencies to generate new knowledge, ideas and processes beneficial to both fields, and to develop a sustainable support base for long-term collaborations across the sectors. Since its establishment in 2004, the program has supported research collaborations between over one hundred artists and scientists.

In 2021 two Synapse residencies were delivered with the generous support of the Copyright Agency's Cultural Fund.

**Dr Svenja J Kratz** (Tas) + Associate Professor Brad Sutherland, School Of Medicine, UTas + Associate Professor Jane Nielsen, Centre For Law And Genetics, UTas + Distinguished Professor Dietmar W. Hutmacher, Centre in Regenerative Medicine, QUT

**Dr Svenja J Kratz's** *Posthuman Genetic Legacies* examined the scientific potential and legal implications of securing alternative genetic offspring via biotechnological intervention. The project drew on the artist's recent experience of uterine pathology and impending menopause to consider alternative conceptions of motherhood and reproduction. In particular, the project investigates the potential of cell culture and genetic engineering to acquire biological offspring when conventional reproductive pathways are compromised or traditional conceptions of motherhood are undesirable.

[Read Svenja's Synapse Blog here](#)

**Linda Dement** (NSW) & **Paul Brown** (NSW) + Dr Carmine Gentile, Cardiovascular Regeneration Group, University Of Technology Sydney

Artists **Linda Dement** and **Paul Brown** worked with **Dr Carmine Gentile** and his team on the generation of 'heart patches' using 'mini-hearts' designed to repair damaged hearts. This was possible thanks to Dr Gentile's expertise in creating human living heart tissue using cells, hydrogels and a 3D bioprinter. Linda, Paul and Carmine previously 3D printed a heart for their successful 2020 collaboration for the Sydney Museum of Futures. For this exhibition, the heart was 3D printed in the UTS Protospace lab and a hydrogel patch was generated in Dr Gentile's laboratory to cover the heart. In their 2021 ANAT Synapse residency, Paul and Linda planned to work with Carmine in bringing together art and "heart" science taking up concepts and material processes for production of living cells.

[Read Linda and Paul's Synapse Blog here](#)

### AUSTRALIAN ANTARCTIC ARTS FELLOWSHIP

Covid had a significant impact on all aspects of the Australian Antarctic Program. No arts researchers travelled to the icy continent in 2021. We look forward to expeditions for artists **Janet Laurence** and **Dr Philip Samartzis**, during the 2021/22 season.

Janet will spend time at Australia's Casey research station to develop an immersive installation. Philip plans to produce a series of high-resolution sound recordings of Mawson station, completing a sound map of the Australian Antarctic Territory.

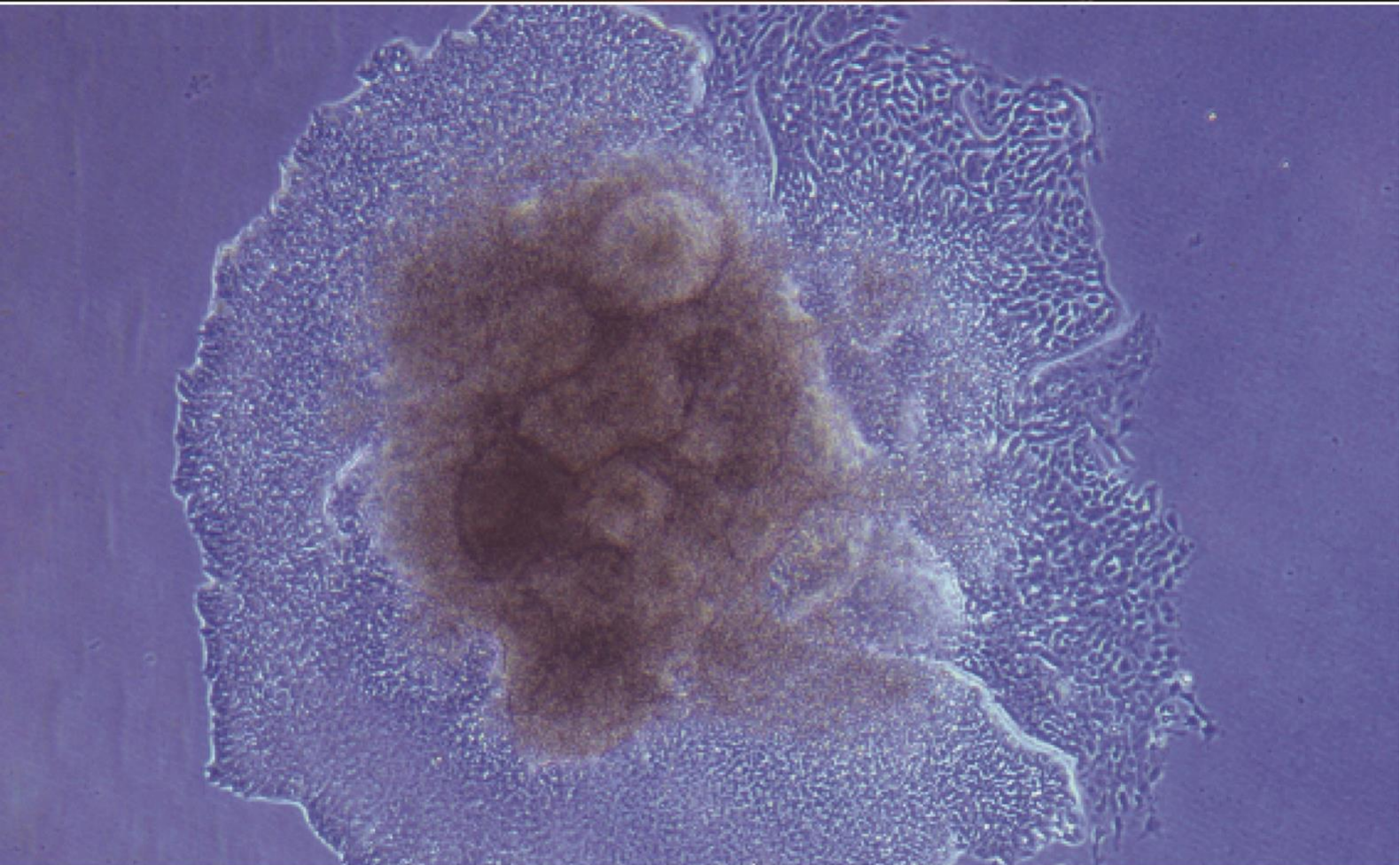
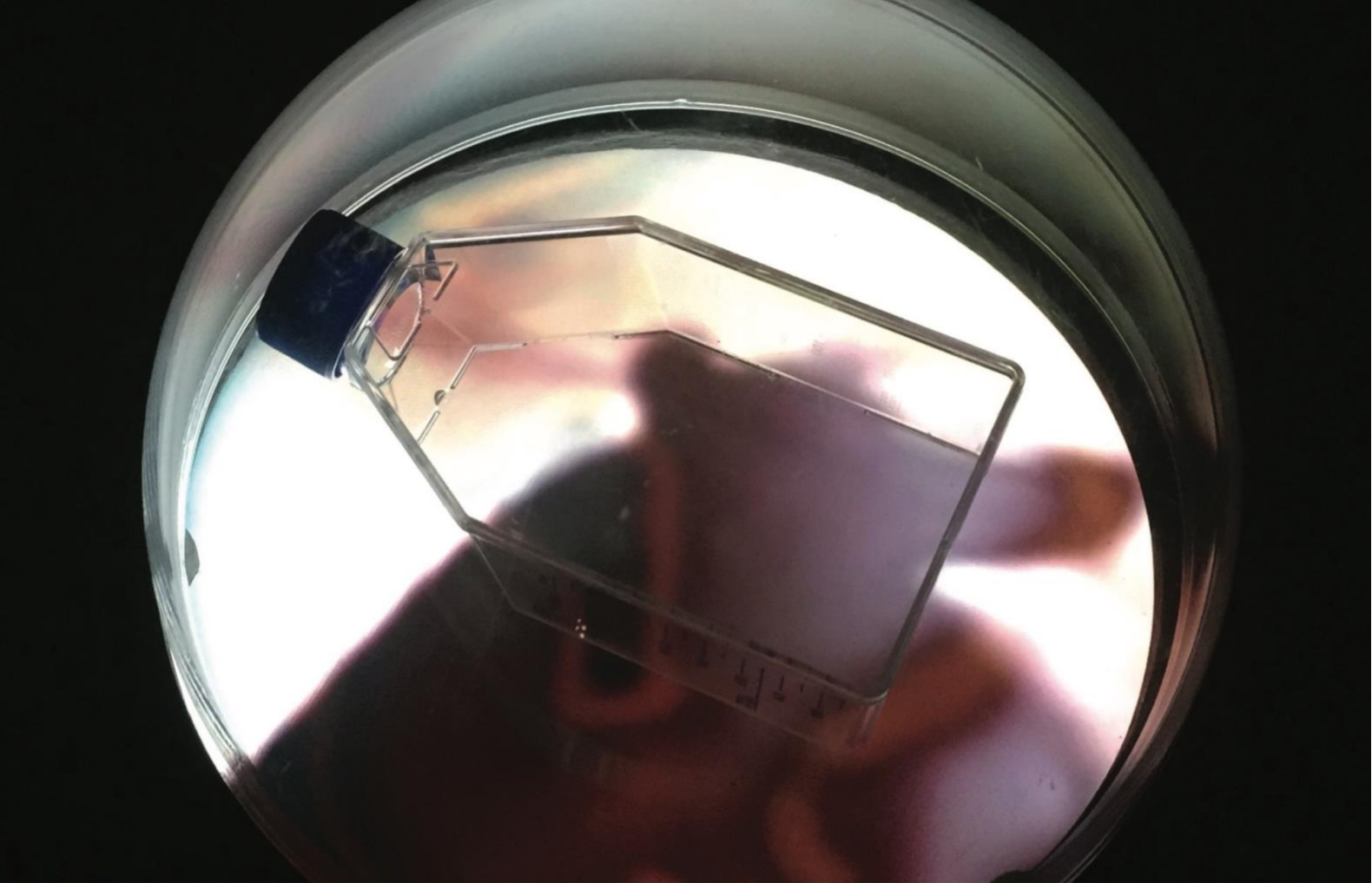


Image top: 2021 ANAT Synapse resident **Svenja J Kratz**, SVKR-LM: Tumour Baby, 2020. Detail of video and fixed primary human cells in cell culture flask Below: 2021 ANAT Synapse resident **Svenja J Kratz**, iPSC cells before cleaning, removing cell build up (in the centre of colonies) and any differentiated cells.



The map expands on Philip's work produced over two Antarctic Arts Fellowships (2010, 2016) where sound recordings were made of Casey, Davis and Macquarie Island stations, and RSV Aurora Australis. The completed sound map will span 12 years and demonstrate how the Australian Antarctic Territory has been transformed through the introduction of new technologies, transport and building projects, as well as shifts in climate and weather due to anthropogenic change.

Award winning Australian musician and composer **David Bridie**, and renowned artist **Dr Keith Deverell** who works in video, installation, sound and performance, were awarded the 2021/22 Australian Antarctic Arts Fellowship. Together, David and Keith will record and film the continent's natural soundscapes and stories to create an immersive audio-visual art installation and accompanying music album capturing Antarctica.

The partnership will deliver an interesting and unique immersive experience of Antarctica and is designed to provoke thought and action in new and broad audiences. We look forward to announcing the dates for David and Keith's fellowship

The Australian Antarctic Arts Fellowship has been running since 1984 and is supported by the Australian Antarctic Division with additional support provided by ANAT since 2017.

### **ANAT SAHMRI RESIDENCY**

In 2020 we were delighted to partner with SAHMRI (South Australian Health and Medical Research Institute), South Australia's flagship health and medical research institute, hosting world-class research programs.

The inaugural ANAT SAHMRI residency was an opportunity for an artist to engage with issues around the ownership and governance of DNA material. In particular, the residency facilitated interdisciplinary knowledge generation focused on the myriad ethical, philosophical, legislative and other frameworks that inform the status of DNA material once it leaves its originating body.

The 2020 ANAT SAHMRI Residency was awarded to **Dr Helen Pynor**, whose collaborative research with Dr Jimmy Breen, leader of the SAHMRI Bioinformatics Platform, explored ideas around the body's porosity, the way the body 'leaks' out into the world in ways we don't necessarily think about, and that DNA is part of that story.

The project continued into 2021, mainly due to the Covid-19 pandemic severely impacting the artist's ability to travel to undertake essential, in-situ work at SAHMRI in Adelaide.

Dr Carolyn Johnston, Senior Research Fellow in law and biotechnology at Health, Law and Emerging Technologies (HeLEX@Melbourne) at the University of Melbourne, will also contribute to the residency. Dr Johnston's research into the legal issues arising from large-scale infrastructure such as biobanks and data-sharing networks will be of particular relevance and value.

## ANAT DNA LAB

Building on the inaugural 2020 ANAT SAHMRI residency the ANAT DNA Lab brought together a multidisciplinary set of artists, researchers and thinkers from across Australia to engage with issues around the ownership and governance of DNA material. The program provided a laboratory focusing on experimental, artist-led explorations of the ethical, philosophical, legislative and other frameworks surrounding this interdisciplinary field of creative research.

Facilitated by curator and writer **Lucie McIntosh**, the DNA Lab combined four days of probing the messiness and mystery of biology, with speculative workshops and reading groups. Presentations by guest speakers **Dr Jimmy Breen, Dr Carolyn Johnston, Associate Professor Bastien Llamas**, as well as insights from SAHMRI resident **Dr Helen Pynor** were highlights.

Participants: **Guy Ben-Ary, Dr Anton Hassell, Alison Kennedy, Dr Svenja Kratz, Dr Helen Pynor, Dr Andrea Russell, Nathan Thompson and Dr David Williams**

ANAT has commissioned an online research repository for the collective DNA-related research.

The ANAT DNA Lab was supported by ANAT and the South Australian Health and Medical Research Institute (SAHMRI).

## ANAT SPECTRA 2021

ANAT SPECTRA is Australia's pre-eminent showcase of the best research and creative work being produced through interdisciplinary collaborations between artists, scientists and technologists.

Postponed in September 2020, in 2021 David Pledger was announced as the inaugural ANAT SPECTRA Program Curator, bringing his curatorial vision to the project around the theme *Multiplicity*.

Maintaining the integrity of ANAT SPECTRA as an in-person gathering of the network is essential to our flagship event. Due to COVID related border restrictions the delivery of ANAT SPECTRA continued to be precarious. As discussions evolved a new potential partner emerged, Science Gallery Melbourne, and a blended delivery model: presentations online and in-person in Melbourne in April 2022 was proposed.

We would like to thank our key partner, the Faculty of Fine Art & Music (The University of Melbourne) for their ongoing support through access to expertise, and the academic panel chair, Robert Walton and symposium coordinator Zamara Robison who, along with Melissa DeLaney and David Pledger and independent peer reviewers, will select works for the 2022 program.

Other generous program partners include The Things We Did Next, Typecast Entertainment and EPIC web designers who with their infinite patience and support continue to support and develop ANAT SPECTRA for next year.

## NEW LIGHT 2021

Presented by **Illuminate Adelaide** and ANAT, New Light 2021 showcased experimental and diverse moving image works by contemporary First Nations artists, presented on the media screens at the **Adelaide Festival Centre**.

Through a national call out, New Light featured commissioned work by **Lyndon Davis, Jasmine Miikika Craciun and Ryan Andrew Lee**, exploring compelling and complex concepts. The artworks were displayed on the media screens at the entrance to the Adelaide Festival Centre during Illuminate Adelaide.

Lyndon's work *Beeyali* is a Kabi Kabi word meaning 'to call'. This work visualises the calls of different species on Kabi Kabi Country using cymatics, the science of visualising acoustic energy or sound. Beeyali involves a series of experiments using different environmental materials to reveal cymatics, such as ochre and local flora on the Sunshine Coast.

Jasmine's *The Healing* is an exploration of the artist's experience in the digital space as an Aboriginal person and represents a visual journey towards personal healing and protection.

Ryan's work *Buried* is the second phase of contemplative moving image works that examine the imposition of destructive Western Industrialist systems on First Nations Peoples and culture on stolen lands. The work brings to light the complex intertwined First Nations and British Settler history of St. Clair valley.

Presented by Illuminate Adelaide and ANAT in association with Adelaide Festival Centre's Moving Image program.

## INDIGENOUS PROTOCOLS AND ARTIFICIAL INTELLIGENCE PROTOTYPE 2021

ANAT was honoured and excited to support **Old Ways, New** to work with practitioners in the development of the Indigenous Protocols and Artificial Intelligence (IP//AI) Prototype in 2021.

### [READ Out of the Black Box: Indigenous protocols for AI](#)

**Authors:** Angie Abdilla, Megan Kelleher, Rick Shaw, Tyson Yunkaporta

**Publisher:** United Nations Educational, Scientific and Cultural Organization (UNESCO)

Old Ways, New are supporting Indigenous creative practitioners, researchers and technologists to realise how Indigenous protocols can inform Artificial Intelligence. The prototype practitioners will play a pivotal role in conceptualising and designing the future of AI from the social and environmental principles integral in our living cultural practices, embodied by Caring for Country, Caring for Kin.

The fourth iteration of the Indigenous Protocols and Artificial Intelligence body of work entailed the development of a prototype, informed by the work produced within the IP//AI Incubator, earlier in the year. Old Ways, New brought core participants from the IP//AI Inc. into a discrete process that further developed and released practical and tangible ways to engage with the body of research culminating over three years. Key to this next iteration of the work was the framing and application of the Indigenous protocols devised as part of the IP//AI Inc.



The work supported by ANAT provided funding to support Indigenous participants **Tyson Yunkaporta, Megan Kelleher** and **Rick Shaw** from diverse cultural and technology practices. Together with Old Ways, New, ANAT promoted the developments and outcomes of the experience. These were shared with our networks via ANAT's four social media channels, over the final weeks of 2021. A series of weekly posts over two months highlighted the key findings from the paper, promoting the paper itself to new audiences.

These digital stories shared in November and December of 2021 received record engagement by ANAT's network. The narratives featured visual storytelling by New Light artist **Jasmine Miikika Craciun**. The series generated significant discussion and awareness about this vital work and research.

## 2021 ANAT ALUMNI OUTCOMES

Iconic peer-reviewed academic journal **Leonardo** published sets of extended abstracts of a selection of papers, presented at ANAT SPECTRA 2018. Organised by theme, the first set of abstracts features in the August journal and continued over several subsequent issues.

ANAT Alumnus Catherine Truman's exhibition, ***Shared Reckoning***, featured in the 2021 Adelaide Festival program at the Santos Museum of Economic Botany in the Adelaide Botanic Garden. The presented experimental videos and installations, built on Catherine's long practice working between art and science and continued relationships forged in her 2011 ANAT Synapse residency, with Professor Ian Gibbins, who was Head of Anatomy and Histology at Flinders University.

2019 AAD fellows Dr Adam Nash and Dr John McCormick aka, Wild System were scheduled to present the outcome of their research and time in Antarctica, the VR experience ***Aurora Australis Ultimo Choro***, at ACMI in August 2021. Unfortunately, Covid 19 restrictions, closed Melbourne's CBD over several months.

2020 ANAT Ideate artists Guy Ben-Ary and Nathan Thompson, were awarded a **24th Art Division Excellence Award** by the Japan Media Arts Festival for their media installation *Bricolage*. During their creative research for ANAT Ideate, Nathan and Guy continued developing their concept of a 'In-Vitro Intelligence driven Surrogate Performer' – a bioengineered entity that has direct biological links to its donor and embodies the abilities to perform.

*Bricolage* also received an **Honorary Mention in the Artificial Intelligence & Life Art** category of the **2021 Prix Ars Electronica**. In October 2021 *Bricolage* was selected for the **2022 New Technological Art Award (NTAA)**. One of 20 nominees, selected from 836 candidates representing 72 nations.

2020 ANAT Synapse resident Niki Sperou and her collaborator Research Officer Peng Su from Flinders University's Centre for Marine Bioproducts Development were finalists for the second time, in the **SA Science + Innovation Awards** - Excellence in Science and Industry Collaboration, for their *Green Plastics - Blue Ocean* project.

ANAT Alumnus, sound artist Associate Professor Philip Samartzis exhibited in Verbier, Switzerland in June 2021. ***Eco Acoustics: Listening To A Changing Environment***, a five kilometer walk among glaciers near the Matterhorn listening to various sounds of ice Philip recorded in Antarctica and the Swiss Alps, was drawn in part from his archive of sound recordings and research during his AAD Arts fellowships.

2021 ANAT Synapse residents Dr. Svenja J. Kratz, Dr. Paul Brown and Linda Dement featured in the **3rd Bioprinting Workshop for Tissue Engineering and Regenerative Medicine**: October 4 - 5, 2021. Together with ANAT alumnus and board member Dr. Erica Seccombe and internationally recognised experts in the field of 3D bioprinting Dr Carmine Gentile and Prof. Dietmar W Hutmacher, they discussed arts and science collaborations.

Like 2020, 2021 saw widespread closure of venues, exhibitions, universities and opportunities, due to Covid 19 restrictions and disruptions.

# 2021 PROGRAM

---

## ANAT SYNAPSE 2021

**3 RESIDENT ARTISTS**  
**4 RESEARCH COLLABORATORS**  
**3 RESEARCH INSTITUTIONS**

Artist **Dr Svenja J Kratz**  
+ As Prof Brad Sutherland  
School of Medicine, UTAS  
+ As Prof Jane Nielsen  
Centre for Law and Genetics, UTAS  
+ Distinguished Prof Dietmar Huttmacher  
Centre in Regenerative Medicine Group, QUT

Artist **Linda Dement** and **Paul Brown**  
+ Dr Carmine Gentile,  
Cardiovascular Regeneration Group,  
University of Technology Sydney

### Partners

University of Tasmania  
University of Technology Sydney  
Queensland University of Technology

---

## ANAT SAHMRI 2021

**1 RESIDENT**  
**2 RESEARCH COLLABORATORS**  
**1 RESEARCH INSTITUTION**

Artist **Dr Helen Pynor**  
+ Dr Jimmy Breen  
Leader of SAHMRI Bioinformatics Platform  
+ Dr Carolyn Johnston  
Consultant Academic Lawyer / Ethicist

### Partner

SAHMRI (South Australian Health and Medical  
Research Institute)

---

## INDIGENOUS PROTOCOLS AND ARTIFICIAL INTELLIGENCE PROTOTYPE 2021

**1 PARTNER ORGANISATION**

ANAT supported **Old Ways, New** in the publication  
of the UNESCO publication, the fourth iteration of  
the *Indigenous Protocols and Artificial Intelligence*

---

## NEW LIGHT 2021

**3 COMMISSIONED ARTISTS**  
**2 PARTNER ORGANISATIONS**

Commissioned artists **Lyndon Davis**,  
**Jasmine Miikika Craciun** and **Ryan Andrew Lee**

### Partners

+ Illuminate Adelaide  
+ Adelaide Festival Centre

## ANAT DNA LAB

**8 ARTIST PARTICIPANTS**  
**3 RESEARCH COLLABORATORS**

Artist Participants **Guy Ben-Ary**, **Dr Anton Hassell**,  
**Alison Kennedy**, **Dr Svenja Kratz**, **Dr Helen Pynor**,  
**Dr Andrea Russell**, **Nathan Thompson** and  
**Dr David Williams**

Facilitator **Lucie McIntosh**

Guest Speakers **Dr Jimmy Breen**, **Dr Carolyn Johnston**, Associate Professor **Bastien Llamas**

---

## 2021 AUSTRALIAN ANTARCTIC DIVISION ARTS FELLOWSHIP

**0 RESIDENTS**  
**1 PARTNER ORGANISATION**

The coronavirus pandemic had significant impact  
on all aspects of the AAD Arts Fellowship in 2021.  
Artists **Janet Laurence**, **Dr Philip Samartzis**, **David Bridie** and **Keith Deverell's** fellowships postponed.

### Partner

+ Australian Antarctic Division

---

## EXPERIMENTA LIFE FORMS COMMISSION

**1 ARTIST**  
**3 ARTS ORGANISATION PARTNERS**

Artist **Brad Darkson**

### Partners

+ Experimenta Media Arts  
+ The Lock-Up, Newcastle (NSW)  
+ Plimsoll Gallery UTAS, Hobart (TAS)

---

## ARCHIVING AUSTRALIAN MEDIA ART

**10 PARTNER ORGANISATIONS**

This 3 year research project began in 2019, to  
conserve significant media artworks and develop a  
best-practice method for the preservation of digital  
media arts heritage to be shared publicly.

### Partners

Australian Research Council, Swinburne University,  
RMIT University, the Australian Centre for the Moving  
Image, the Art Gallery Of NSW, the State Library  
of South Australia, Griffith University Art Museum,  
Experimenta Media Arts, dLux Media Arts, and  
Rhizome.



## ADVOCACY

Over the course of 2021, the ANAT CEO and ANAT Team sat on numerous panels and participated in and attended many events, with the following providing a snapshot:

### ASSESSMENT + ADVISORY PANELS

- Assessor: Australian Antarctic Arts Fellowship (Melissa DeLaney)
- Advisory Committee, Adelaide Film Festival Tales in Light Project (Melissa DeLaney)
- Australia Council Peer Assessor (Melissa DeLaney)
- University of Wollongong advisory partners, ARC Linkage Project: Empowering Visual Artists via Australian Creative Blockchain Opportunities (Melissa DeLaney and Jenn Brazier)
- Archiving Australian Media Art Committee (Melissa DeLaney)
- ARC Centre of Excellence for Extreme Event Visualisation Board, UNSW (Melissa DeLaney)
- Lot 14, Adelaide Cultural Advisory Committee (Dearna Newchurch)
- South Australian Film Corporation, First Nations Advisory Panel (Dearna Newchurch)

### AWARDS

From a strong field of applicants, ANAT CEO Melissa DeLaney was selected as one of two recipients of the Sir Edward 'Weary' Dunlop Fellowships for participation in the Asialink Leaders Program. Melissa joined a global network of Asialink Leaders contributing through workshops, a summit and projects to the evolving Asia-Australia narrative.

Melissa says 'this valuable experience connected me to vital national and international networks in other sectors and disciplines and extended my leadership work within the education sector at RMIT Vietnam. Living and working in Asia taught me the power of soft leadership, of listening and opening up spaces for connection and what happens when conversation becomes a system of value in building relationships within professional life.'

### SUBMISSIONS

- Arts SA, Capacity and Diversity Development Funding (cultural sensitivity training with Bookabee)
- Australia Council for the Arts Digital-Strategist-In-Residence Program with Dr Lynda Kelly
- Copyright Agency Limited, Synapse residency

### ARTIST SUPPORT

- ANAT wrote 16 letters of support for artists.

### ARTIST Meetings

- ANAT CEO, Melissa DeLaney: 95
- ANAT Program Manager, Jenn Brazier: 36
- ANAT Marketing and Communications Manager, Carollyn Kavanagh: 18
- ANAT First Nations Program Producer, Deanna Newchurch: 27

## **PRESENTATIONS + INTERVIEWS**

**Reverberating Future Symposium:** Melissa DeLaney, panelist.

Artist Fiona Hillary PhD presentation at Deakin University, Botanist, Gustaaf Hallegraeff (University of Tasmania); Paul Balassone (Melbourne Water)

**Molior Rethinking Our Futures: Art and Collaboration:** ANAT selection partner

International symposium prompted by the current challenges of curatorial practices in digital art.

**AAANZ Conference:** ANAT alumni Dr Erica Seccombe, Dr Helen Pynor, Dr Jimmy Breen and Dr Svenja Kratz, presenters.

The annual conference brings together art historians, artists and curators each year to share the latest research in the sector.

**RMIT Curatorial Collective:** Melissa DeLaney, keynote speaker

A platform for contemporary art, cultural exchange and dialogue.

**Third Australian Bioprinting Workshop:** ANAT 2021 Synapse residents Linda Dement, Paul Brown and Svenja Kratz, ANAT alumni Erica Seccombe, presenters.

Presented by the Gentile Lab and Australian Bioprinting, with an educational focus, with the goal to promote early career researchers and students, by sharing their work around bioink development, stem cells, biomaterials, and other topics relevant to 3D bioprinting technologies.

**Invest Hong Kong Webinar - Creative Industries: Driving Innovation and Future Growth:**

Melissa DeLaney, presenters.

Industry experts from various creative disciplines and leading market players from Hong Kong, Australia, Japan and Korea shared the current state of digital development and the opportunities of the creative economy.

**Backbone:** Melissa DeLaney, opening speaker.

Mark Niehus solo exhibition at Newmarch Gallery, Prospect, SA.

**Ethos Public Forum #4 DIY DNA:** ANAT SAHMRI resident Dr Helen Pynor and collaborator genomic scientist Dr Jimmy Breen, provocation presentation

Ethos presented by MOD. is a forum for future-focused ethical issues relating to research, technological development and the broader social context.

# ANAT STATISTICS 2021

## 16

### PARTICIPATING AUSTRALIAN ARTISTS

## 7

### PARTICIPATING PARTNERS

- School of Medicine, UTAS
- Centre for Law and Genetics, UTAS
- Centre in Regenerative Medicine Group, QUT
- Cardiovascular Regeneration Group, University of Technology Sydney
- SAHMRI Bioinformatics Platform
- Old Ways, New
- Illuminate Adelaide

## 6

### PARTICIPATING SCIENCE & RESEARCH COLLABORATORS

#### As Prof Brad Sutherland

School of Medicine, UTAS

#### As Prof Jane Nielsen

Centre for Law and Genetics, UTAS

#### Distinguished Prof Dietmar Huttmacher

Centre in Regenerative Medicine Group, QUT

#### Dr Carmine Gentile

Cardiovascular Regeneration Group, University of Technology Sydney

#### Dr Jimmy Broom

SAHMRI Bioinformatics Platform

#### Dr Carolyn Johnston

Consultant Academic Lawyer / Ethicist

### ANAT WEBSITE AUDIENCES 1 JAN – 31 DEC, 2021

#### USERS

15,074

#### INCREASE OF

18%

#### SESSIONS

23,727

#### INCREASE OF

30%

#### PAGEVIEWS

41,459

#### INCREASE OF

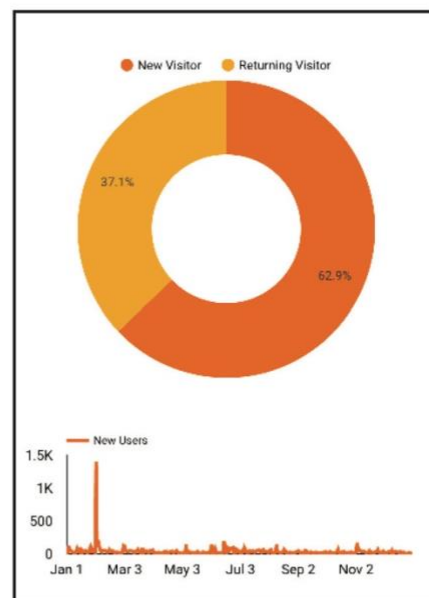
3%

#### Language breakdown

Language	Users	New Users
1. en-us	6,778	6,740
2. en-au	3,455	3,420
3. en-gb	2,633	2,597
4. zh-cn	445	445
5. c	293	293
6. en	163	162
7. fr-fr	93	93
8. es-es	82	81
9. ar	72	72
... it-it	69	70

#### Country breakdown

Continent	Users	New Users
1. Oceania	8,241	8,156
2. Americas	2,711	2,702
3. Asia	2,384	2,372
4. Europe	1,395	1,383
5. Africa	237	238
6. (not set)	83	82



### ANAT COMMUNICATIONS CHANNELS



#### MAILCHIMP

Digest has 2892 subscribers  
Digest average open rate 24–34%  
Digest average click rate 4–7%

Single Subject EDM (ANAT calls, news or event) open rate 33–47%  
Single Subject EDM (ANAT calls, news or event) click rate 3–16%



#### TWITTER

89K FOLLOWERS

Strategy: Light touch strategy building brand awareness



#### INSTAGRAM

2104 FOLLOWERS

PEAK POST REACH 2.5K

Strategy: Building brand awareness and driving traffic to the ANAT site. Only sharing ANAT projects, residents, events, alumni and partner projects.



#### LINKEDIN

752 FOLLOWERS

Strategy: Light touch strategy building brand awareness



#### FACEBOOK

2655 FOLLOWERS

2581 PEOPLE LIKE ANAT

PEAK POST REACH 8.5K (JUN 2021)

Strategy: Building a community, contributing to our art + science + technology network by generously sharing sector opportunities and events. A key goal is promoting and supporting First Nations artists.



#### YOUTUBE

30 SUBSCRIBERS

Strategy: Light touch strategy building brand awareness

## ANAT extends sincere thanks to all our stakeholders and partners who helped us make 2021 such a success:

**Adelaide Festival Centre:** Charissa Davies. **Arts South Australia:** Jennifer Layther, Sandra Naulty. **Australia Council for the Arts:** Andrew Donovan, Cara Kirkwood, Tegan Richardson. **Australian Antarctic Division:** Sachie Yasuda, Tiffany Brooks. **Copyright Agency Cultural Fund:** Nicola Evans. **EPIC Digital:** Nick Vernal, Asher Charles. **Flinders University:** Dr Peng Su, Professor Wei Zang. **Illuminate Adelaide:** Rachael Azzopardi, Lee Cumberlidge. **Leonardo:** Professor Roger Malina, Erica Hruby, Danielle Siembieda. Jon McCormack. **Lucent Advisory:** Jeremy Altschwager, Nina Shen, Simon Wagner. Lucie McIntosh. Dr Carolyn Johnston. **Old Ways New:** Angie Abdilla. **QUT:** Prof. Dietmar Hutmacher. **Radio Adelaide:** Naomi Hunter, Phoebe Christofi. **SAHMRI:** Dr Jimmy Breen, Dr Nigel Rogasch. **Symbiotica:** the Centre of Excellence for Biological Arts at the University of Western Australia (UWA). Catherine Truman. **Science Gallery, Melbourne -** Rose Hiscock, Ryan Jefferies and Tilly Boleyn. **The Things We Did Next:** David Pledger, Sophia Marinos, Alex Kelly. **University of Melbourne:** Faculty of Fine Arts and Music and Victorian College of the Arts, Professor Marie Sierra, Robert Walton, Zamara Robison, Sue Thornton, Susan Bird, Jon Cattapan, Eric Gardiner. **UTAS:** Brad Sutherland, Jane Nielson. **UTS:** Dr. Carmine Gentile. **Vault Magazine:** Sophie Prince.

Thank you to the ANAT network, the artists and alumni at the organisation's centre.

ANAT works on Kaurna Country and also the lands of the Peramangk, Wurundjeri, and Yalukit Willam clan of the Boon Wurrung people in the Kulin nation. We pay our respects to Elders past, present and future. We recognise First Nations people as the first artists and scientists.

ANAT is assisted by the Australian Government through the Australia Council for the Arts, its arts funding and advisory body; the South Australian Government through Arts South Australia; and through the Visual Arts and Craft Strategy, an initiative of the Australian, State and Territory Governments. ANAT's Synapse program is made possible by the Copyright Agency's Cultural Fund.





# ANAT | DNA Lab 2021



Image top: Building on the inaugural 2020 ANAT SAHMRI residency, the ANAT DNA Lab brought together a multidisciplinary set of artists, researchers and thinkers from across Australia to engage with issues around the ownership and governance of DNA material. Image **Andrea Russell**, Still from *The Society of NanoBioSensing*, Scanning Electron Microscopy image.

Below: *Aurora Australis Ultimo Choro* a VR experience created from laser scans, aerial drone recordings, 360-degree video, ambisonic sound, high-definition video and photos taken during 2019/20 Australian Antarctic Arts Fellows **Dr Adam Nash** and **Dr John McCormick**, aka **Wild System's** residency aboard the icebreaker RSV Aurora Australis, on its final voyage.